

NEWCASTLE-UNDER-LYME BOROUGH COUNCIL

**CORPORATE LEADERSHIP TEAMS' REPORT TO HEALTH, WELLBEING AND
ENVIRONMENT SCRUTINY COMMITTEE**

15 September 2025

Report Title: Newcastle Community Safety Partnership – Community Safety Action Plan 2025/26

Submitted by: Service Director – Neighbourhood Delivery

Portfolios: Community Safety and Wellbeing

Ward(s) affected: ALL

<u>Purpose of the Report</u>	<u>Key Decision</u> Yes <input type="checkbox"/> No <input checked="" type="checkbox"/>
To provide the Committee with an overview of successful work that has been delivered by the Community Safety Partnership in 2024/25, and planned actions for 2025/26 in the Local Police and Crime Plan and the Community Safety Action Plan, in response to the Strategic Assessment priorities for 2025/2026.	
<u>Recommendation</u> That Committee:- 1. Receives the report and notes the successful outcomes achieved in reducing crime and anti-social behaviour, as well as the work in progress to continue to tackle the strategic priorities. 2. Receives and notes the updated Local Crime and Police Plan in line with the Strategic Assessment priorities for 2025/26.	
<u>Reasons</u> To deliver the Council's statutory obligations in relation to Community Safety and to contribute to reducing crime and anti-social behaviour in Newcastle-under-Lyme.	

1. Background

- 1.1 The Council, Staffordshire Police, and other agencies work collaboratively under the umbrella of the Community Safety Partnership to identify and address community safety issues across the Borough.
- 1.2 Like many other areas across the UK, Newcastle-under-Lyme experiences issues relating to crime and anti-social behaviour which can have a negative impact on community perceptions of the Borough. To address this, a

number of initiatives are in progress which are being jointly planned and delivered by the Council, the Police and other Community Safety Partnership agencies. These plans form part of the Local Police and Crime Plan (see appendix 1)

- 1.3 This report focuses on the performance of the Community Safety Partnership in dealing with the strategic priorities as outlined in the Community Safety Strategic Assessment which is prepared on behalf of the Police, Fire and Crime Commissioner and which has recently been refreshed for 2025/26.

2. **Strategic Priorities for 2024/2025**

- 2.1 The Community Safety Strategic Assessment is commissioned on behalf of the Police, Fire and Crime Commissioner to provide Community Safety Partnerships (CSPs) a data led assessment on the issues within the Borough. The CSP then formulate an action plan which outlines their response as to how they will tackle the priorities identified.

The priorities for 2024/2025

- Anti-social behaviour
- Community Cohesion and Tackling Extremism
- Domestic Abuse
- Drugs and County Lines
- Fraud
- Serious Violence and Violence Against Women and Girls
- Safeguarding Vulnerable Persons

3. **Community Safety Partnership performance for 2024/2025**

- 3.1 The following information provided by Staffordshire Police as of April 2025, illustrates data for Newcastle-under-Lyme showing a trend of reducing incidences across all types of offences compared to 2023/24, with the exception of drug related offences where an increase has occurred due to a stepping up of police activity in stop searches and intelligence gathering.

	Previous 12 months April 23 – March 24	Current 12 months April 24 – March 25	% change
ASB	1846	1802	-2%
DA	3026	2666	-12%
Drugs	168	245	+46%
Fraud	94	70	-26%
SVAWG	2129	1912	-10%

The below chart shows the comparative data for Staffordshire Police across the whole of Staffordshire and Stoke-on-Trent for 2023/2024 - 2024/2025.

Classification: NULBC **UNCLASSIFIED**

	April 23 - March 24	April 24 - March 25	% Change
ASB	16,393	15,032	-8%
DA	26,928	25,375	-6%
Drugs	1,925	2,441	27%
Fraud	859	737	-14%
SVAWG	20,713	19,814	-4%

This shows that Newcastle is following a similar trend across these crime types but that in most areas crime and anti-social behaviour is reducing.

Priority : Anti-Social Behaviour

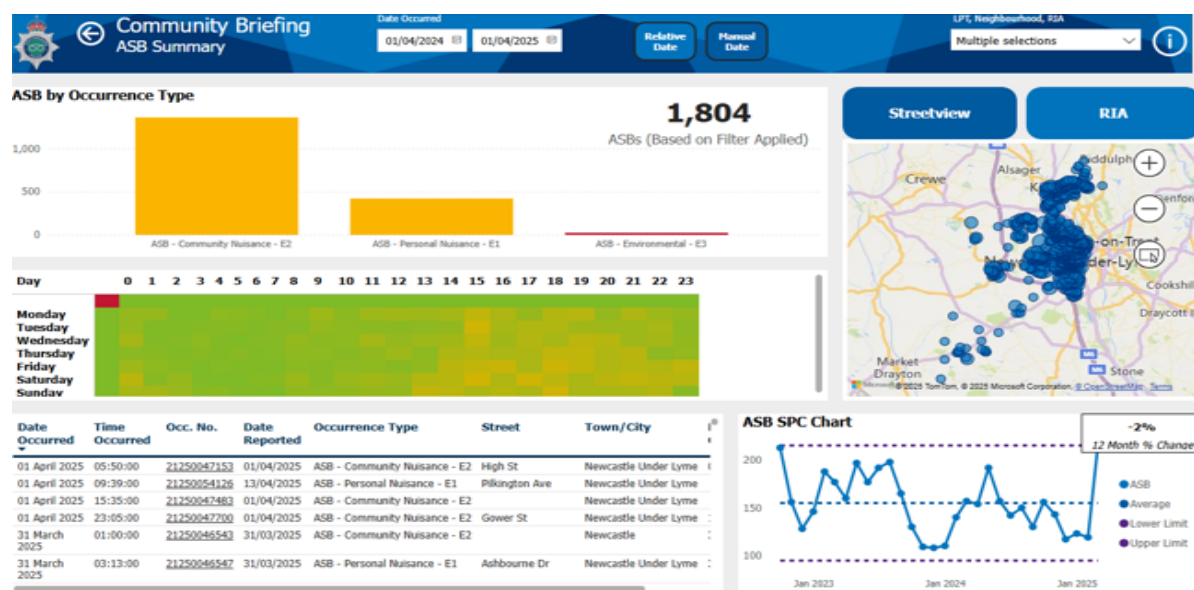


Figure 1– Staffordshire Police ASB performance figures 2024/2025

- There has been an increase of 2% in relation to reported cases of anti-social behaviour.
- Hotspot areas are Newcastle town centre, Kidsgrove, Chesterton and Bradwell.

Priority: Drug Related Offences

Classification: NULBC **UNCLASSIFIED**

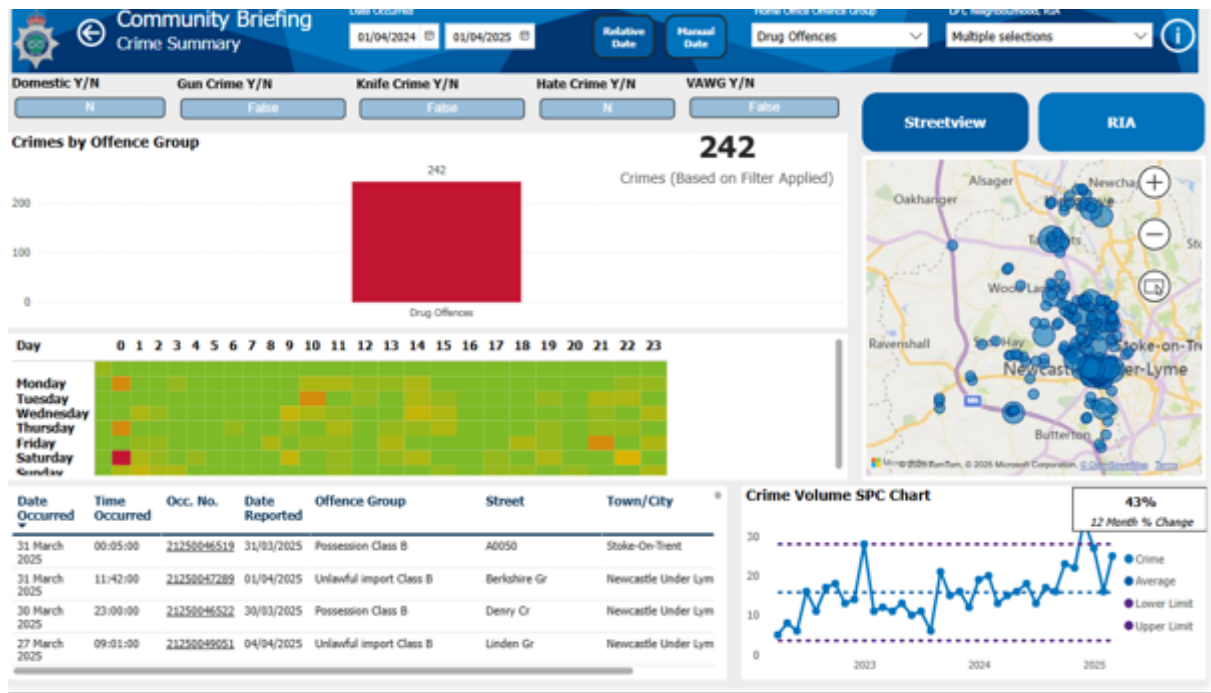


Figure 2 – Staffordshire Police drug performance figures 2024/2025

- During 2024/2025 there has been an increase of 43% in relation to drug related offences across the Borough. The increase can be attributed to the following initiatives:

The introduction of the proactive Policing Team which focused on drug supply and stop searches.

There has been a force-wide drive to increase the number of stop searches across Staffordshire which has seen an increase in possession of drug offences.

Neighbourhood teams are now adopting a problem solving approach which is tackling drug supply.

Newcastle has a high rate of intelligence reports.

Priority: Violence

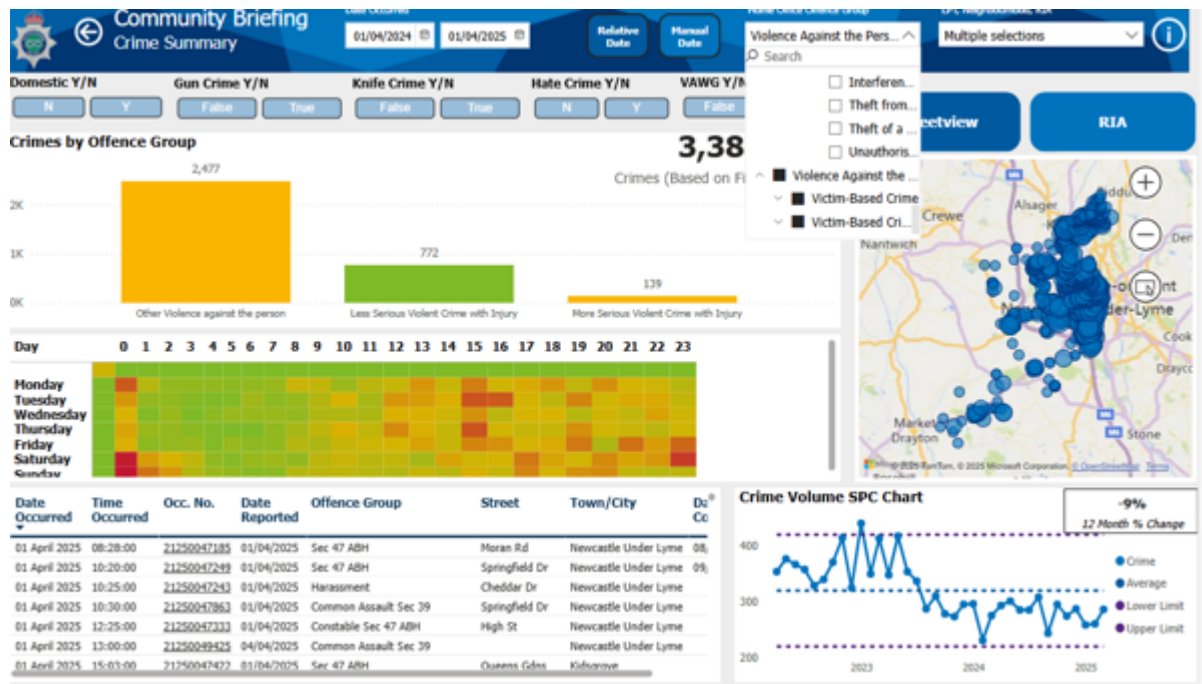


Figure 3: Staffordshire Police performance data for Violence 2024/2025.

There has been a 10% decrease in violence offences during 2024/2025.

The Community Safety partnership (CSP) has continued a number of projects to tackle violence including;

Operation Sceptre – Knife crime awareness

Knife warrants issued to all licenced premises as part of the night time economy.

Introduction of knife bins where people can safely deposit unwanted knives

Street medics to act as triage services for the nighttime economy

Serious Violence Duty funding received from Violence Reduction Alliance

which was used by the CSP to extend diversionary activities in Kidsgrove and Chesterton.

SCYVS have rolled out the virtual display education on knife crime and gangs.

Priority: Domestic Abuse

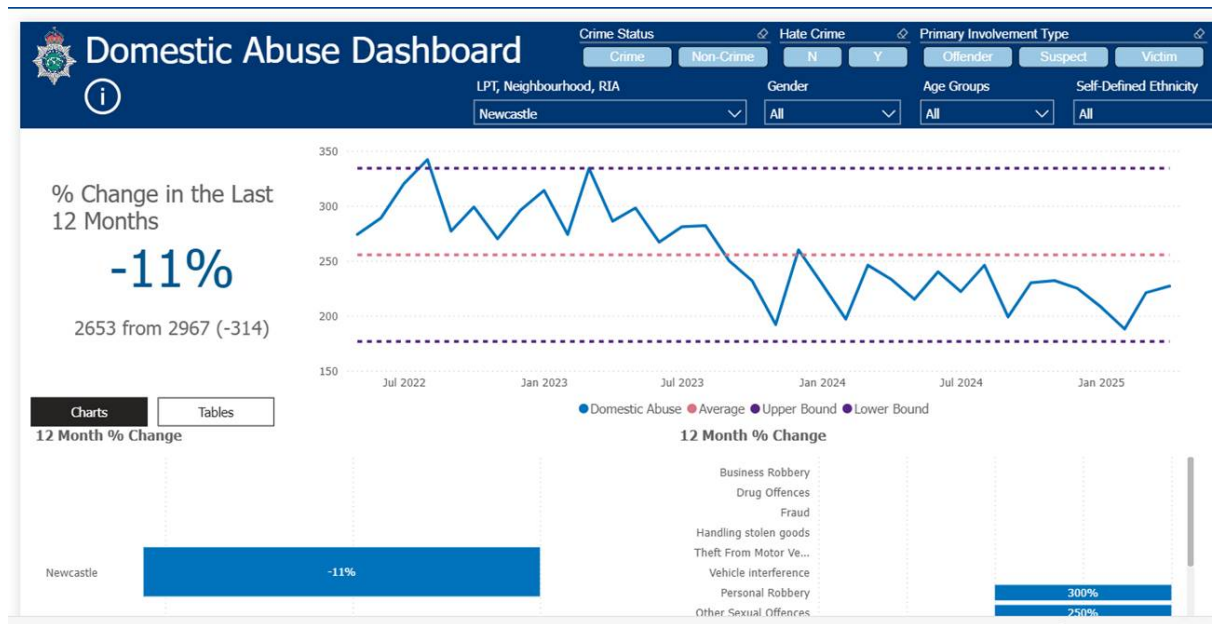


Figure 4: Staffordshire Police performance data for Domestic abuse 2024/2025

The Community Safety Partnership host weekly case conferences referred to as MARAC to discuss the most high risk victims in domestic abuse. This forum look to implement actions around victims to improve their safety.

Total number of cases heard on MARAC over the past three years

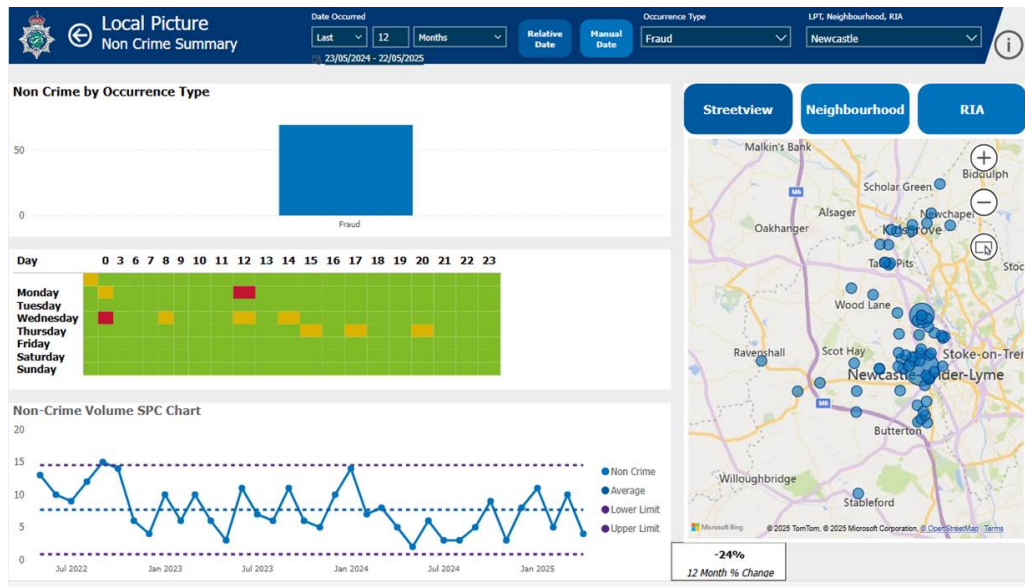
2023 – 240

2024 - 256

2025 (to date May 2025) – 85

Any cases that do not meet the threshold for MARAC but result in repeat calls to the Police can be heard at the Problem Solving meeting which is held every 2 weeks.

Priority: Fraud



There have been 69 incidents of fraud in the last 12 months. This is down by 21% on the previous 12 months.

Priority: Vulnerability

The CSP co-ordinate the Vulnerability Hub which is a case conference to discuss the most vulnerable residents in the Borough. The aim is to reduce their vulnerability and risk.

Total number of referrals to the Vulnerability Hub 2023/2024 – 190.

Total number of referrals to the Vulnerability Hub 2024/2025 - 205

The Council also funds the role of the Safe Recovery Officer through the Community Safety Fund. The role of this officer is provide face to face support with vulnerable individuals who chose not to engage with statutory services or do not meet the threshold for those services.

Staffordshire Police monitor all incidents reported into them in their daily briefings where all crime is reviewed. There is further scrutiny via the in force threat and grip meetings where crime is reviewed and allocated to appropriate officers/teams and any named offenders are considered.

Staffordshire Police also review performance on a weekly basis and any problem profiles for the neighbourhood policing team are referred onto the partnership problem solving meeting for intervention.

4. **Community Safety Priorities for 2025/ 2026**

4.1 The Newcastle-under-Lyme Strategic Assessment was commissioned by the Office of Police, Fire and Crime Commissioner and undertaken by the centre for Public Innovation to generate the Community Safety Priorities for 2025-2026.

The priorities are:

- Continue to Reduce Violence Against the Person
- Continue to Reduce Theft Offences
- Continue to Reduce Stalking and Harassment
- Continue to Reduce Violence without Injury
- Continue to Reduce Violence with injury
- Continue to Reduce Anti-social behaviour

Additional CSP priorities for Newcastle as identified by local stakeholders include:

- Reduce Business Crime
- Reduce Shoplifting
- Reduce Domestic Abuse
- Reduce Drugs (and County Lines)

The Community Safety Partnership Action Plan and the Local Crime and Police Plan establishes how we will address and tackle these priorities during 2025-2026.

A copy of the Local Crime and Police Plan (which will be shared online) will set out the Community Safety Partnership commitment in delivering on the strategic priorities. This can be found at appendix 1.

4.2 The Newcastle Partnership Board, which meets on a bi-monthly basis, provides the governance structure for community safety in the Borough, and reports to the County-wide Safer and Stronger Communities Strategy Group, hosted by Staffordshire County Council.

4.3 The Office of the Police, Fire and Crime Commissioner provide the Community Safety Partnership with an annual Community Safety Fund (formerly LDF) to support the commissioning of projects to help to target their priorities.

This year the Community Safety Partnership have been awarded the sum of £82,333 and the following projects are currently being commissioned (in agreement with the commissioners office) :

- Street Medics
- Taxi Marshals

- Diversionary Youth Activities
- Joint Operations Group funding
- Safe Recovery Officer
- Reactive fund

5 Recommendation

- 5.1** That Committee receives the report and notes the successful outcomes achieved in reducing crime and anti-social behaviour, as well as the work in progress to continue to tackle the strategic priorities.
- 5.2** Receives and notes the updated Local Crime and Police Plan in line with the Strategic Assessment priorities for 2025/26

6 Reasons

- 6.1** To deliver the Council's statutory obligations in relation to Community Safety and to contribute to reducing crime and anti-social behaviour in Newcastle-under-Lyme.

7 Options Considered

- 7.1** The Community Safety Partnership structure enables a range of options to be considered to address specific issues, and appropriate interventions to be agreed between partners.

8 Legal and Statutory Implications

- 8.1** The Council, the Police and other agencies in the Community Safety Partnership have a range of powers and duties available to enable appropriate interventions and enforcement action.
- 8.2** The Council has a statutory duty to deliver the Community Safety function as part of its role in the Newcastle Partnership.

9 Equality Impact Assessment

- 9.1** An Equality Impact Assessment has been updated in relation to enforcement activities undertaken by the Council.

10 Financial and Resource Implications

- 10.1** There are no additional financial or resource implications directly relating to this report. The staffing resource required to deliver the activities referred to in this report are situated with the Neighbourhood Delivery Service and Regulatory Services.

11 Major Risks & Mitigation

- 11.1** Without the Community Safety Partnership, there would be limited resource and capacity to deal with crime and ASB.
- 11.2** There would therefore be a risk of an increase in crime and ASB across the Borough, and in the town centre in particular.
- 11.3** Lack of funding could result in no delivery of some community safety projects that assist with reducing vulnerability and early intervention projects for low level ASB. The Community Safety Partnership pools resources and enables targeted funding bids to be made for identified priority projects.

12 UN Sustainable Development Goals (UNSDG)

12.1 The proposal contributes towards the following UNSDGs:



12.2 This project contributes to the UN Sustainable Development Goals above as follows:

- Good health and wellbeing – the projects will help to support the well-being of residents who have suffered from anti-social behaviour and crime
- Peace, justice and strong institutions – it will help to bring those who cause ASB to justice by assisting the Police and preventing locations in the Borough from experiencing Crime and ASB.

13 Key Decision Information

13.1 Not applicable.

14 Earlier Cabinet/Committee Resolutions

14.1 Cabinet 8th July 2025.

15 List of Appendices

15.1 Appendix 1 – Local Crime and Police Plan 2024-2027 (updated May 2025)

16 Background Papers

16.1 None